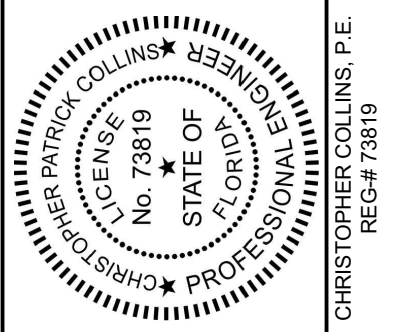




696 N.E. 125th STREET
NORTH MIAMI, FL 33161
Phone: 305.720.2079
C.O.A. 33221



5/25/2022
This item has been digitally signed and sealed by Christopher P. Collins, P.E. on the date adjacent to the seal.

Printed copies of this document are not considered signed and sealed and the signature must be verified on any electronics copies.



Christophe
r Collins

Digitally signed by
Christopher Collins
Date: 2022.07.14
12:27:42 -05'00'

Revision Date
Comment

Revision Date
Comment

Revision Date
Comment

Revision Date
Comment

Revision Date
Comment

Revision Date
Comment

Revision Date
Comment

Designed by: C.P.C.

Drawn by: A.T.S.

Checked by: C.P.C.

Approved by: C.P.C.

Scale: 1" = 40'

Date: 05/25/2022

Job No.: I002

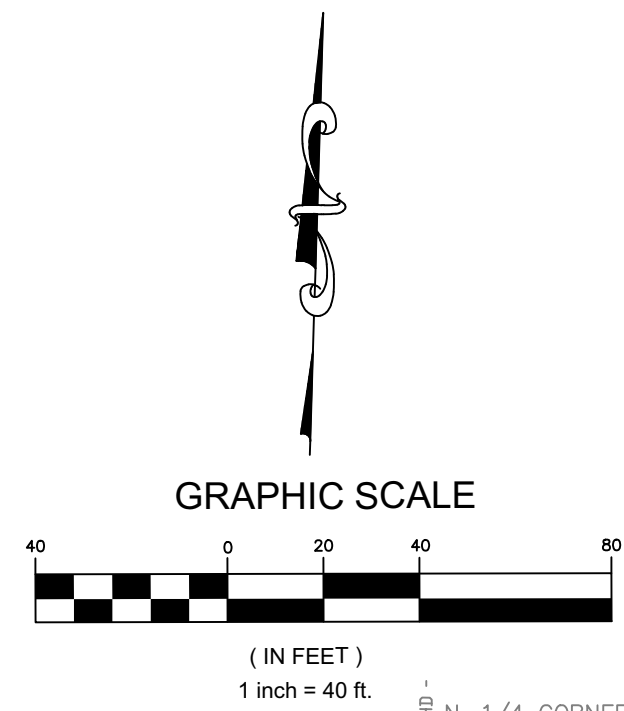
Plans for
**FESTIVAL
MARKETPLACE**
2900 W SAMPLE ROAD
POMPANO BEACH,
FLORIDA

**EROSION
CONTROL
PLAN
PHASE I**

DRC
PZ22-12000027
8/17/2022

DRAINAGE SYMBOLS LEGEND

- PROPERTY LINE
- CE PROPOSED TEMPORARY CONSTRUCTION EXIT / ENTRANCE
- SF PROPOSED SILT FENCE
- IP1 FILTER SACKS INLET PROTECTION
- EXISTING INLET



EROSION SEDIMENTATION CONTROL NOTES

MAINTENANCE OF EROSION CONTROL MEASURES IS OF PARAMOUNT IMPORTANCE TO IMC PROPERTIES. THE CONTRACTOR IS RESPONSIBLE FOR COMPLYING WITH ALL EROSION CONTROL MEASURES SHOWN ON THE PLANS. THE EROSION CONTROL SYSTEM DESCRIBED WITHIN THE CONSTRUCTION DOCUMENTS SHOULD BE CONSIDERED TO REPRESENT THE MINIMUM ACCEPTABLE STANDARDS FOR THIS PROJECT. ADDITIONAL EROSION CONTROL MEASURES MAY BE REQUIRED DEPENDENT UPON THE STAGE OF CONSTRUCTION, THE SEVERITY OF THE RAINFALL EVENT AND/OR AS DEEMED NECESSARY AS A RESULT OF ON-SITE INSPECTIONS BY THE OWNER, THEIR REPRESENTATIVES OR THE JURISDICTIONAL AUTHORITIES. THESE ADDITIONAL MEASURES SHALL BE INSTALLED AT NO ADDITIONAL COST TO THE OWNER. IT IS THE CONTRACTOR'S ULTIMATE RESPONSIBILITY TO ASSURE THAT THE STORM WATER DISCHARGE FROM THE SITE DOES NOT EXCEED THE TOLERANCES ESTABLISHED BY ANY OF THE JURISDICTIONAL AUTHORITIES. REFERENCE THE EROSION CONTROL PLAN AND DETAILS.

THIS PLAN HAS BEEN PREPARED TO ENSURE COMPLIANCE WITH RULES OF THE FLORIDA DEPARTMENT OF ENVIRONMENTAL PROTECTION, CHAPTER 17-25-FAC.

- SITE**
- A. SITE CONDITIONS
1. SITE OPERATOR (CONTRACTOR) SHALL PREPARE A CONSTRUCTION SCHEDULE THAT INCLUDES THE DATE GRADING WILL BEGIN AND THE EXPECTED DATE OF STABILIZATION. AND SHALL INCLUDE THE CONSTRUCTION SCHEDULE AS PART OF THIS STORM WATER POLLUTION PREVENTION PLAN (SWPPP).

- B. SEQUENCE OF IMPLEMENTATION OF CONTROLS
1. INSTALLATION OF CONTROL MEASURES (CONSTRUCTION ENTRANCE, SILT FENCE, FILTER SACKS, GUTTER EEL, ETC.)
2. DEMOLITION AND CLEARING, GRUBBING AND EXCAVATION
3. CONSTRUCTION ACTIVITIES ASSOCIATED WITH THE BUILDING, SITE DEVELOPMENT, AND INFRASTRUCTURE NECESSARY TO SERVE THE PROPOSED PROJECT.
4. FINAL STABILIZATION.

- C. PHASING OF CONTROL MEASURES
1. PHASE 1- INITIAL PHASE
THIS PHASE INCLUDES EROSION AND SEDIMENT CONTROL MEASURES REQUIRED BEFORE AND DURING DEMOLITION STAGE OF CONSTRUCTION.

- THIS PHASE INCLUDES
- ESTABLISH STABILIZED CONSTRUCTION ENTRANCE.
 - INSTALLATION OF SILT FENCE.
 - INSTALL FILTER SACKS IN OFF-SITE INLET GRATES AND PLACE GUTTER EEL ON TOP OF GRATES.
 - INSTALL FILTER SACKS IN EXISTING ONSITE STORM INLETS DURING DEMOLITION.

2. PHASE 2- INTERMEDIATE PHASE
THIS PHASE INCLUDES EROSION AND SEDIMENT CONTROL MEASURES REQUIRED DURING SITE GRADING FROM INITIAL GRADING THROUGH CURB AND GUTTER PHASE.

- THIS PHASE INCLUDES
- INSTALLATION OF FILTER SACKS IN PROPOSED INLETS.
 - MAINTAIN ALL MEASURES IN PHASE 1

3. PHASE 3- FINAL PHASE
THIS PHASE INCLUDES EROSION AND SEDIMENT CONTROL MEASURES REQUIRED DURING FINAL BUILDING CONSTRUCTION, PAVING, AND FINAL LANDSCAPE.

- THIS PHASE INCLUDES
- REMOVAL OF GUTTER EELS FROM RIGHT OF WAY INLETS.
 - MAINTAIN REMAINING MEASURES FROM PHASES 1 AND 2.

CONTROLS

EROSION AND SEDIMENT CONTROL MEASURES ARE TO BE PLACED PRIOR TO, OR AS, THE FIRST STEP IN CONSTRUCTION. THE CONTRACTOR IS RESPONSIBLE FOR COMPLYING WITH ALL EROSION CONTROL MEASURES SHOWN ON THE PLANS. THE EROSION CONTROL SYSTEM DESCRIBED WITHIN THE CONSTRUCTION DOCUMENTS SHOULD BE CONSIDERED TO REPRESENT THE MINIMUM ACCEPTABLE STANDARDS FOR THIS PROJECT. ADDITIONAL EROSION CONTROL MEASURES MAY BE REQUIRED DEPENDENT UPON THE STAGE OF CONSTRUCTION, THE SEVERITY OF THE RAINFALL EVENT AND/OR AS DEEMED NECESSARY AS A RESULT OF ON-SITE INSPECTIONS BY THE OWNER, THEIR REPRESENTATIVES, OR THE APPLICABLE JURISDICTIONAL AUTHORITIES. THESE ADDITIONAL MEASURES (IF NEEDED) SHALL BE INSTALLED AT NO ADDITIONAL COST TO THE OWNER. IT IS NOTED THAT THE MEASURES IDENTIFIED ON THIS PLAN ARE ONLY SUGGESTED BEST MANAGEMENT PRACTICES (BMPs). THE CONTRACTOR SHALL PROVIDE POLLUTION PREVENTION AND EROSION CONTROL MEASURES AS SPECIFIED IN FOOT INDEXES #100 THROUGH #102 AND AS NECESSARY FOR EACH SPECIFIC APPLICATION. IT IS THE CONTRACTOR'S ULTIMATE RESPONSIBILITY TO ASSURE THAT THE STORMWATER DISCHARGE FROM THE SITE DOES NOT EXCEED THE TOLERANCES ESTABLISHED BY ANY OF THE APPLICABLE JURISDICTIONAL AUTHORITIES.

A. EROSION AND SEDIMENT CONTROLS

GENERAL EROSION CONTROL

- A. CLEARING AND GRUBBING OPERATIONS SHALL BE CONTROLLED SO AS TO MINIMIZE UNPROTECTED ERODIBLE AREAS EXPOSED TO WEATHER. GENERAL EROSION CONTROL BMPs SHALL BE EMPLOYED TO MINIMIZE SOIL EROSION AND OFF-SITE SEDIMENTATION. WHILE THE VARIOUS TECHNIQUES REQUIRED WILL BE SITE AND PLAN SPECIFIC, THEY SHOULD BE EMPLOYED PRIOR TO ANY CONSTRUCTION ACTIVITY.

- B. EXCAVATED MATERIAL WILL NOT BE DEPOSITED IN LOCATIONS WHERE IT COULD BE WASHED AWAY BY HIGH WATER OR STORM WATER RUNOFF. STOCKPILED MATERIAL SHALL BE COVERED OR ENCLOSED WITH SEDIMENT CONTAINMENT DEVICES.

- C. STABILIZATION MEASURES SHALL BE IMMEDIATELY INITIATED FOR EROSION AND SEDIMENT CONTROL ON DISTURBED AREAS, CLEARED SITE DEVELOPMENT AREAS WHICH WILL REMAIN AT ROUGH GRADE FOR 7 DAYS OR MORE SHOULD BE STABILIZED IMMEDIATELY BY COVERING WITH ADEQUATE AMOUNTS OF WAY OVER SEEDS AND PERIODICALLY WATERED. SUFFICIENT TO STABILIZE THE TEMPORARY GROUND COVER, OR BY THE USE OF AN APPROPRIATE ALTERNATIVE BMP.

PERMIT SET
MUST BE ON JOBSITE AT ALL TIMES DURING CONSTRUCTION

NOTICE
INSPECTION REQUIRED
24 HRS. PRIOR TO COMMENCING ANY WORK IN THE PUBLIC ROW CONTACT THE BROWARD COUNTY HIGHWAY CONSTRUCTION AND ENGINEERING DIVISION AT 954-577-4600 FOR INSPECTION.

NOTE:
APPROVAL OF THIS PLAN DOES NOT CONSTITUTE A PERMIT FOR CONSTRUCTION.

A PERMIT FOR CONSTRUCTION MUST BE OBTAINED FROM THE BROWARD COUNTY HIGHWAY CONSTRUCTION AND ENGINEERING DIVISION PRIOR TO COMMENCING CONSTRUCTION IN THE PUBLIC RIGHT OF WAY.

ALL MATERIALS USED AND INSTALLATIONS WITHIN THE PUBLIC RIGHT OF WAY OR EASEMENTS SHALL BE IN ACCORDANCE WITH BROWARD COUNTY HIGHWAY CONSTRUCTION AND ENGINEERING DIVISION SPECIFICATIONS.

BROWARD COUNTY HIGHWAY CONSTRUCTION AND ENGINEERING DIVISION

☐ PLAN CONSISTENT WITH PLAT REQUIREMENTS

☐ PUBLIC RIGHT OF WAY APPROVAL FOR PAVING, GRADING AND DRAINAGE

BY: _____ DATE: _____

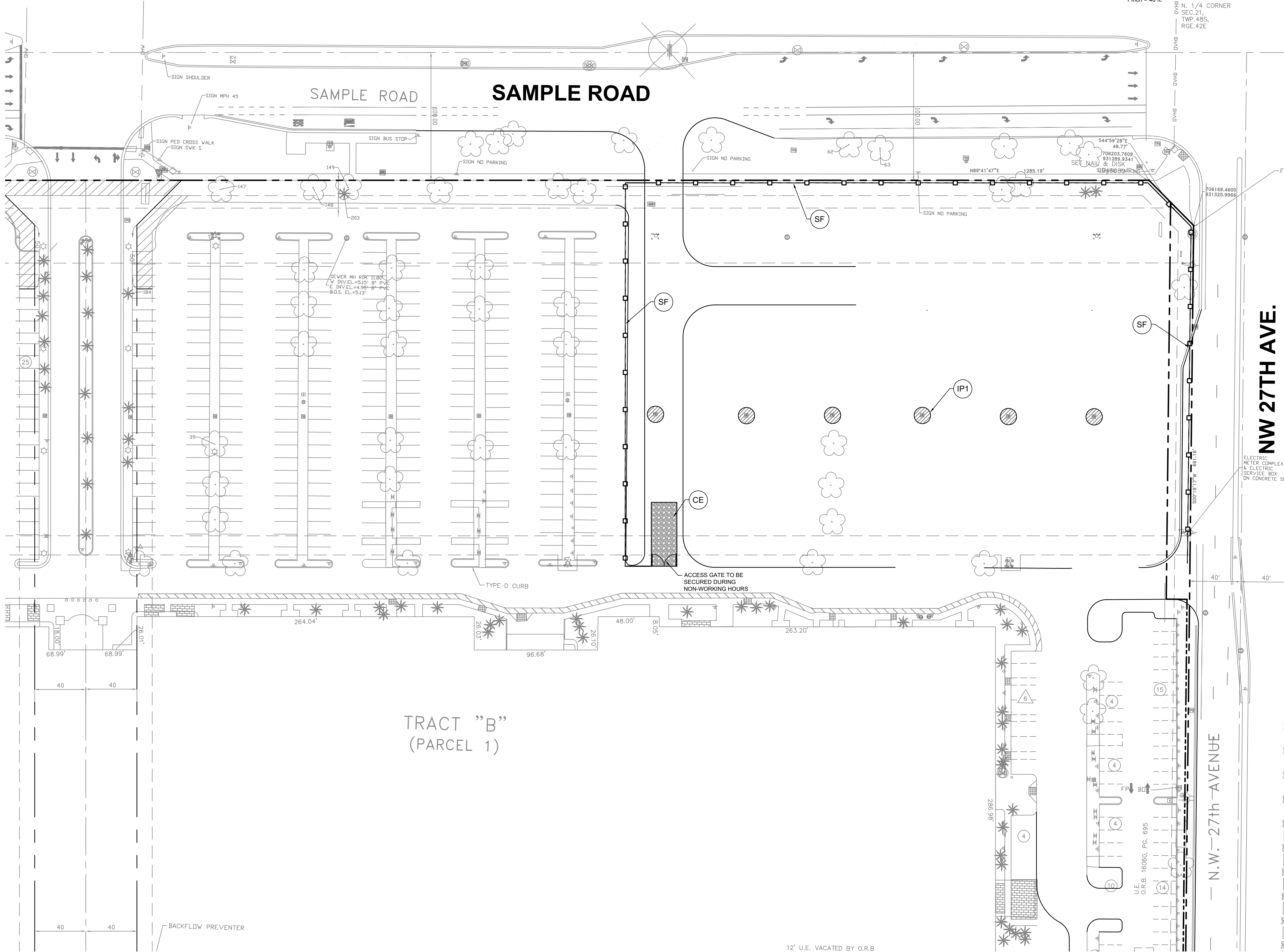
DOES NOT INCLUDE APPROVAL OF PAVEMENT MARKING & SIGNS

Call 8 or visit sunshine.com for full business days before and after the start of the project.

Check positive response codes before you dig!

NOTE:

CONTRACTOR IS REQUIRED TO INSPECT ALL EROSION CONTROL DEVICES DAILY AND AFTER EVERY STORM EVENT AND REPAIR AND/OR REPLACE AS NEEDED



12' U.E. VACATED BY O.R.B.